



PLATECH

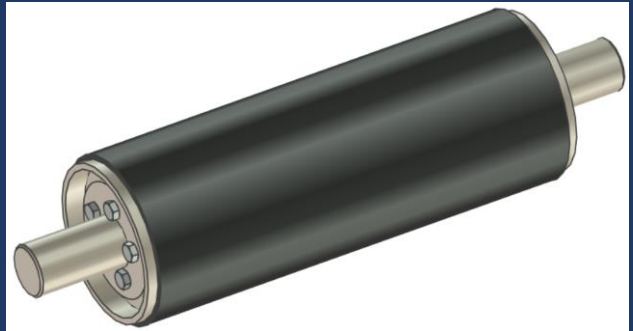


The Future
is here

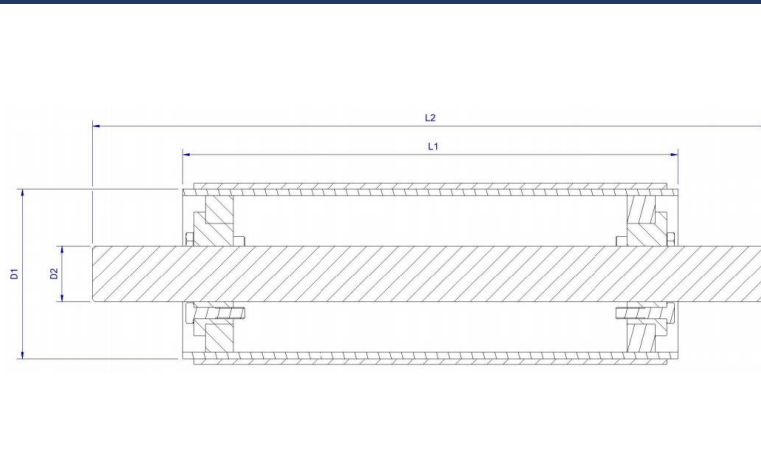


CONVEYOR DRUMS

WE PRODUCE ROLLERS, DRIVE AND RETURN DRUMS ALSO WE MAKE COMPLETE CONVEYOR SYSTEMS ACCORDING TO OUR OWN OR ENTRUSTED DOCUMENTATION

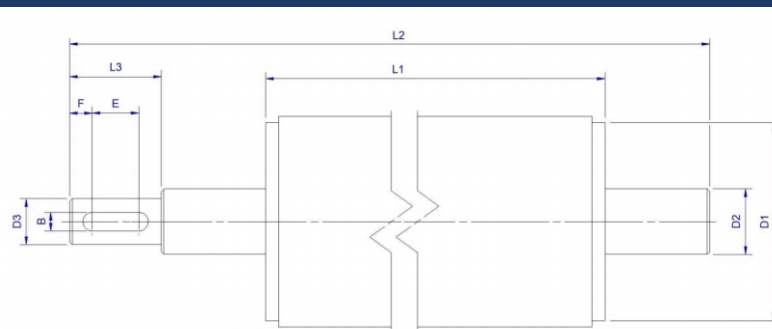


RETURN DRUMS



As a standard, the return drum is made of a pipe and an axle blocked with clamping sleeves that enable the adjustment of the position of the axle in relation to the drum or its replacement. Drums are painted in RAL color, optionally they can be galvanized. As standard, the drums are permanently covered with rubber, increasing their friction against the belt.

DRIVE DRUMS



The standard equipment corresponds to the return drums and is extended by a profiled end of the axle enabling its integration with the drive unit.



PLATECH

PLATECH Sp.zo.o. Ul Czestochowska 3A, 46-320 Strojec



CONVEYOR DRUMS

EQUIPMENT CONFIGURATIONS

Drum surface	<input type="checkbox"/> Cylindrical	<input type="checkbox"/> Barrel
Rubber cover:	<input type="checkbox"/> Yes	<input type="checkbox"/> No
Cover thickness in mm		
Bearings:	<input type="checkbox"/> Yes	<input type="checkbox"/> No
Welded axle:	<input type="checkbox"/> Yes	<input type="checkbox"/> No
Clamping sleeves:	<input type="checkbox"/> Yes	<input type="checkbox"/> No
Zinc cover:	<input type="checkbox"/> Yes	<input type="checkbox"/> No
Paint RAL:		

LIST OF DRUMS DIMENSIONS

L1=	L2=	L3=	E=	F=	D1=	D2=	D3=	B=	
-----	-----	-----	----	----	-----	-----	-----	----	--



PLATECH

PLATECH Sp.zo.o. Ul Czestochowska 3A, 46-320 Strojec